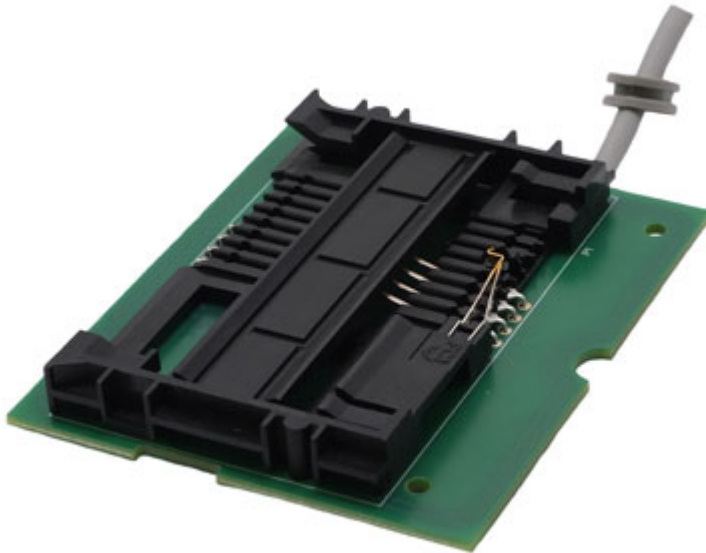


Omniquey 5122 USB dual-interface OEM reader board



The Omnikey 5122 reader board from HID is a dual interface USB 2.0 smartcard reader that reads/writes to both 13.56 MHz contactless smartcards and virtually any contact smartcard technology.

This small PCB assembly is compliant with ISO specifications 14443 A/B and 15693 for contactless and 7816 for contact smartcard technologies. The reader features native CCID driver implementation, supporting Windows, Linux and Mac operating systems.

This reader has the same functionality as the Omnikey 5422 desktop unit, but in an OEM board format. Its contact card reader is the same technology used in the popular Omnikey 3121. A separate mounting bracket is also available if required.

Omniquey part number R51220349

USB contact and contactless OEM reader board from Omnikey

To buy, visit:

<https://www.smartcardfocus.com/shop/ilp/id~860/p/index.shtml>

This Product Briefing has been produced by Dot Origin Ltd, the smart card experts behind SmartcardFocus.com. If you have a query email sales@smartcardfocus.com or call us on +44 (0)1428 685250.

Omnikey 5122 USB OEM reader board

Technical Specifications

Dimensions: 2.6" x 2.16" x 0.43" (66 x 55 x 11mm)

Weight: 2.65oz (75g)

Power Supply: 5V USB powered

Cable length: 70.9" (1.8m)

Operating Temperature: 32 to 131degF (0 to 55degC)

Operating Humidity: 10-95% rH (non-condensing)

MTBF: 500,000hrs

Host Interface

USB CCID (Standard 2.0 Type A connector), USB3.0 extended operability tested with hubs/controllers

Transmission Speed: 12 Mbps (USB full speed)

Contact Smartcard Interface

Supports Processor cards: following either T=0 or T=1 protocol

Supports Memory-based Smartcards: Cards following the 2WBP, 3WPB or I2C bus protocol and EEPROM memory cards such as SLE4418, SLE4428, SLE4442 and others.

Protocol standards: ISO 7816, Class A, B, C (5V, 3V, 1.8V); T=0; T=1; Memory card support

Supported APIs: PC/SC, CT-API (through wrapper on top of PC/SC)

Supply current: 60mA

Smartcard read/write speed: up to 420 kbps

Card detection: Movement detection, Automatic detection of card type, Short circuit and thermal protection

Clock frequency: up to 8MHz

Card insertion cycles: Min 100,000

Contactless Smartcard Interface

Supports: T=CL, MIFARE ISO 14443A/B up to 848kbps, iClass 15693 up to 26kbps, NFC tag types 1, 2 and 4

Human Interface

Status Indicator: Two LEDs

Compliance / Certification

RoHS, WEEE, USB 2.0

Operating System support

Windows, Linux, Mac OS

Manufacturer's part number: R51220349

Two year manufacturer's warranty

Manufacturer: Omnikey

Connection Method: USB

